

EXPLANATION OF PLATES.

PLATE 3.

- Fig. 1. *Anthrax californicus* n. sp.
 Fig. 2. *Anthrax halcyon* Say.

PLATE 4.

- Fig. 3. Abdomen of *A. californicus* from above.
 Fig. 4. Abdomen of *A. nigripennis* n. sp.
 Fig. 5. Wing of *A. nigripennis*.
 Fig. 6. Wing of *A. halcyon* (local variety).

PLATE 5.

- Fig. 7. *Anthrax effrena* Coq.
 Fig. 8. *Anthrax arethusa* var. *autumnalis* n. var.

PLATE 6.

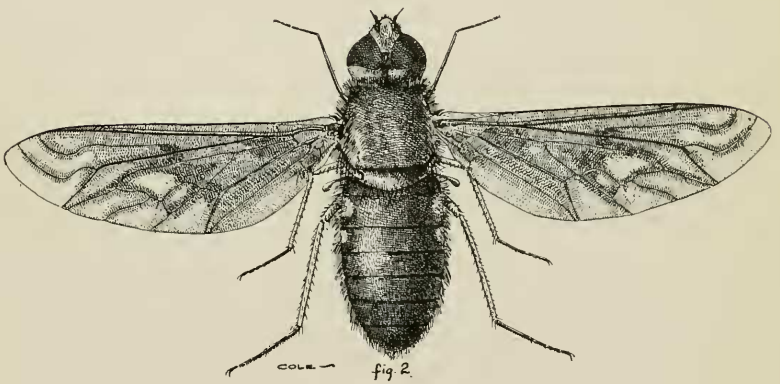
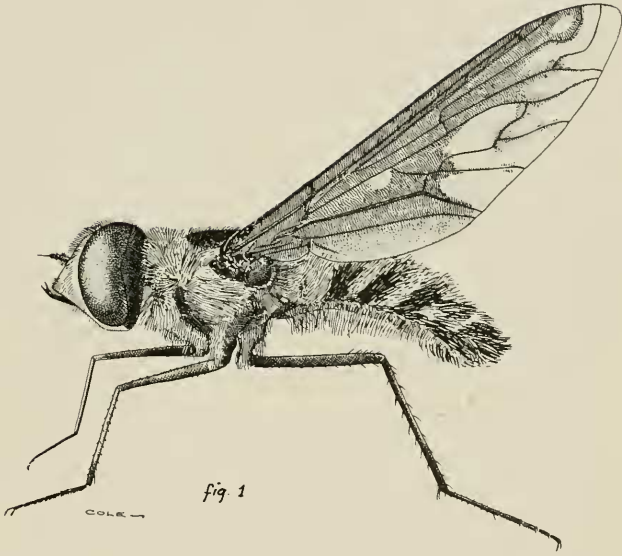
- Fig. 9. *Anthrax alpha* O. S.
 Fig. 10. *Anthrax yellowstonei* n. sp.

PLATE 7.

- Fig. 11. *Anthrax arethusa* O. S., Abdomen. (Redrawn from Osten Sacken.)
 Fig. 11a. *Anthrax arethusa* Wing. (Redrawn from Osten Sacken.)
 Fig. 12. *Anthrax pæcilogaster* O. S., Abdomen. (Redrawn from Osten Sacken.)
 Fig. 12a. *Anthrax pæcilogaster*, Wing. (Redrawn from Osten Sacken.)
 Fig. 13. Antennæ of *A. fuliginosa* Loew.
 Fig. 14. Antennæ of *A. californicus* n. sp.
 Fig. 15. Antennæ of *A. pilosa* n. sp.
 Fig. 16. Antennæ of *A. alpha* O. S.
 Fig. 17. Antennæ of *A. ceyx* Lw.
 Fig. 18. Antennæ of *A. arethusa* var. *autumnalis* n. var.
 Fig. 19. Antennæ of *A. yellowstonei* n. sp.
 Fig. 20. Antennæ of *A. effrena* Coq.
 Fig. 21. Antennæ of *A. nigripennis* n. sp.
 Fig. 22. Wing of *A. fuliginosa* Lw.

MISCELLANEOUS NOTES.

Cardiola obscura Grav. on Staten Island.—I found this aleocharid beetle in some numbers under a pile of decayed weeds in my garden on December 5. Mr. A. S. Nicolay very kindly mounted the specimens for me and sent some to Dr. A. Fényes, by whom the identifi-



Anthrax.